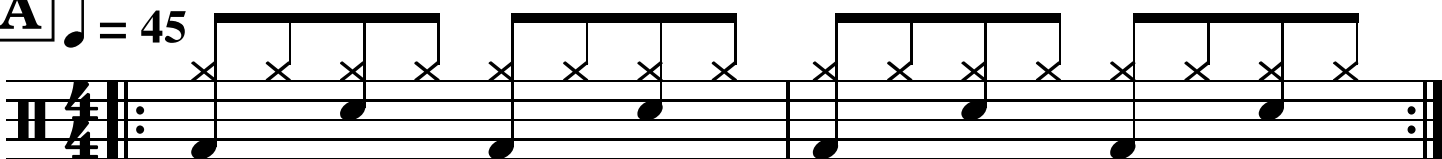


Beginner Drum Beats


A ♩ = 45



Drum beat A notation: A 4/4 time signature with a tempo marking of ♩ = 45. The notation consists of two staves. The top staff has four groups of four eighth notes, each group beamed together. The bottom staff has four quarter notes, each aligned with the first eighth note of the groups above. The first measure is marked with a repeat sign.

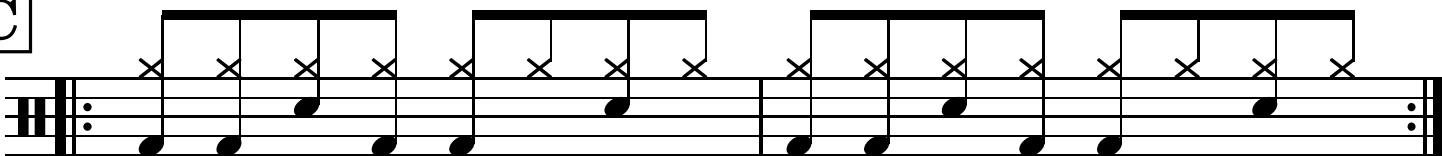
B

1 + 2 + 3 + 4 +



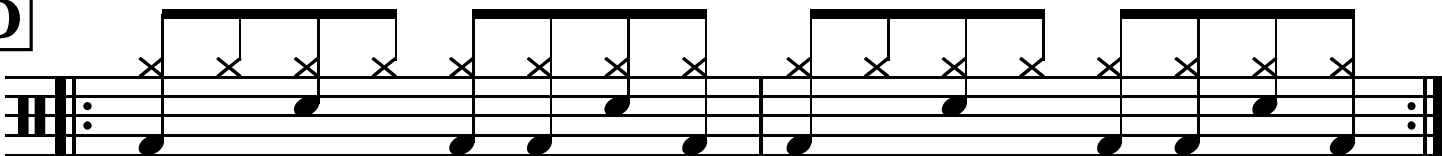
Drum beat B notation: A 4/4 time signature. The notation consists of two staves. The top staff has four groups of four eighth notes, each group beamed together. The bottom staff has four quarter notes, each aligned with the first eighth note of the groups above. The first measure is marked with a repeat sign.

C



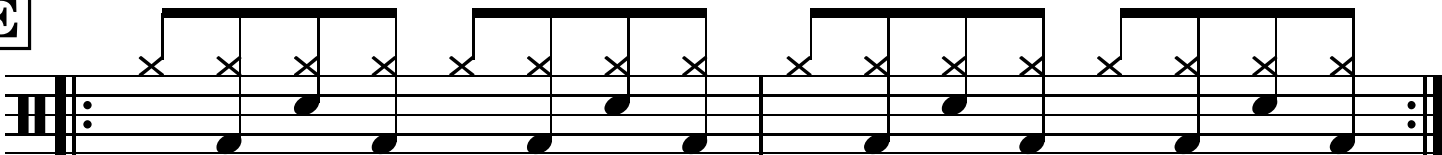
Drum beat C notation: A 4/4 time signature. The notation consists of two staves. The top staff has four groups of four eighth notes, each group beamed together. The bottom staff has four quarter notes, each aligned with the first eighth note of the groups above. The first measure is marked with a repeat sign.

D



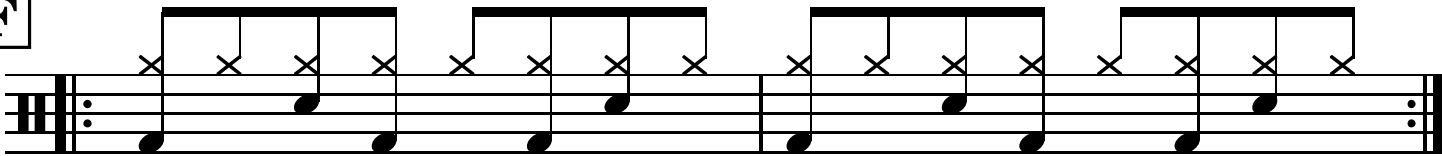
Drum beat D notation: A 4/4 time signature. The notation consists of two staves. The top staff has four groups of four eighth notes, each group beamed together. The bottom staff has four quarter notes, each aligned with the first eighth note of the groups above. The first measure is marked with a repeat sign.

E



Drum beat E notation: A 4/4 time signature. The notation consists of two staves. The top staff has four groups of four eighth notes, each group beamed together. The bottom staff has four quarter notes, each aligned with the first eighth note of the groups above. The first measure is marked with a repeat sign.

F



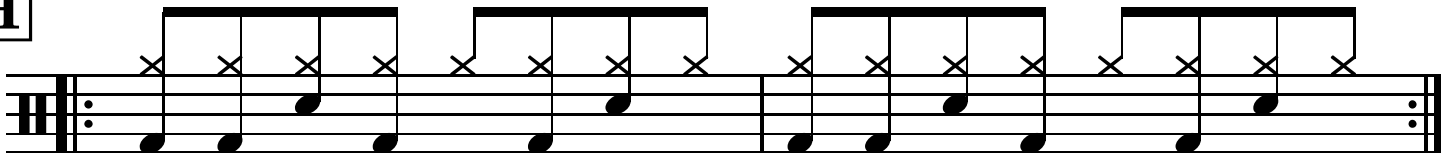
Drum beat F notation: A 4/4 time signature. The notation consists of two staves. The top staff has four groups of four eighth notes, each group beamed together. The bottom staff has four quarter notes, each aligned with the first eighth note of the groups above. The first measure is marked with a repeat sign.

G

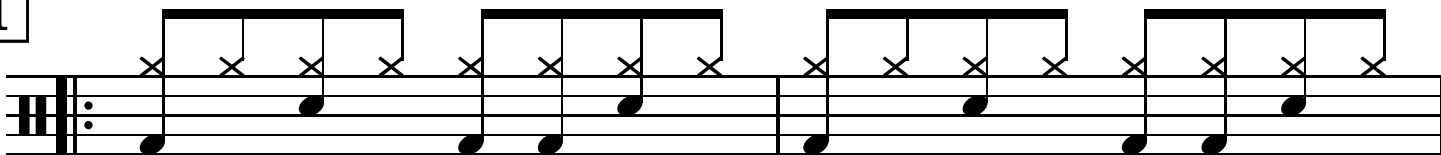


Drum beat G notation: A 4/4 time signature. The notation consists of two staves. The top staff has four groups of four eighth notes, each group beamed together. The bottom staff has four quarter notes, each aligned with the first eighth note of the groups above. The first measure is marked with a repeat sign.

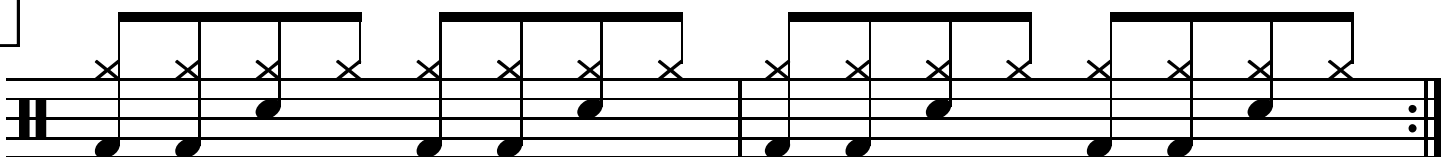
H



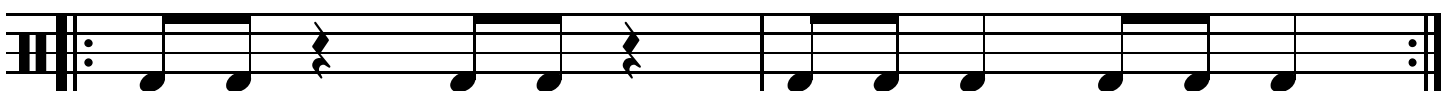
I



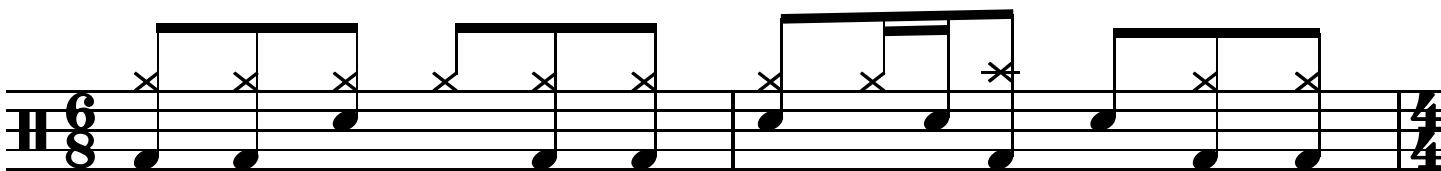
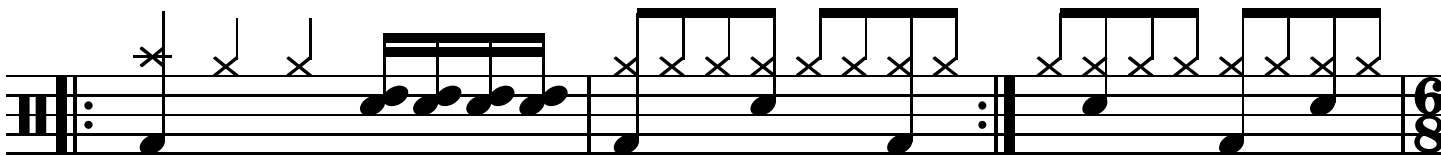
J



K



Bass Drum Warm Up



♩ = 80



